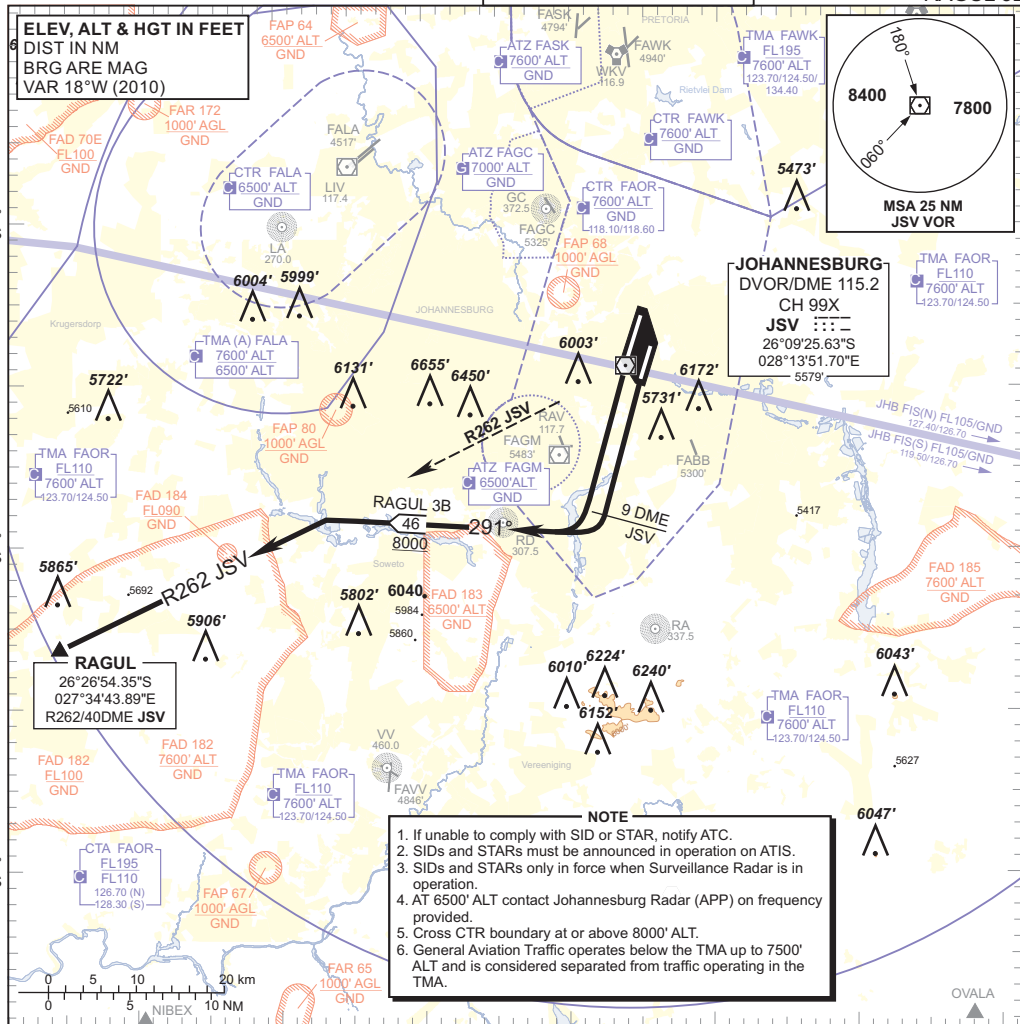


**STANDARD DEPARTURE
CHART -
INSTRUMENT
(SID)**

TRANSITION ALTITUDE
8000'
TRANSITION LEVEL
ATC

RADAR APP S 124.50 TWR E 118.60
E 124.50 W 118.10
W 123.70 ATIS 126.20
DIR 121.40 115.20
ACC N 126.70 SMC 121.90

JOHANNESBURG
(O.R. TAMBO INTERNATIONAL)
RWY 21L/R
RAGUL 3B



**RAGUL 3B,
RWY 21L/R**

Climb to 8000' ALT, maintain RWY track to 9 DME JSV. At 9 DME JSV turn right onto track 291° to intercept R262 JSV (OUBD) to RAGUL. Further climb will be under radar control. At RAGUL set course as per flight plan.

Restricted to a minimum climb gradient of 4.4% to CTR boundary.

- 4.4% @ 140KT IAS = 624 FPM
- 4.4% @ 180KT IAS = 802 FPM
- 4.4% @ 220KT IAS = 980 FPM

COMMUNICATION FAILURE PROCEDURE (Squawk 7600)

Comply with RAGUL 3B SID, climbing to FL100 or maintain last assigned level whichever is higher. Cross 12 DME JSV at FL090 or above if cleared above FL090 by ATC. Cross 18 DME JSV at FL100, or above if cleared above FL100 by ATC. At RAGUL continue as per flight plan.

Aircraft wishing to return must continue to the SID termination point and climb to last assigned level or MSA if last cleared level is below MSA. At RAGUL proceed to NIBEX and comply with the NIBEX 2C RWY 21L STAR Communication Failure procedure.

CHANGE: NDB NIMT withdrawn